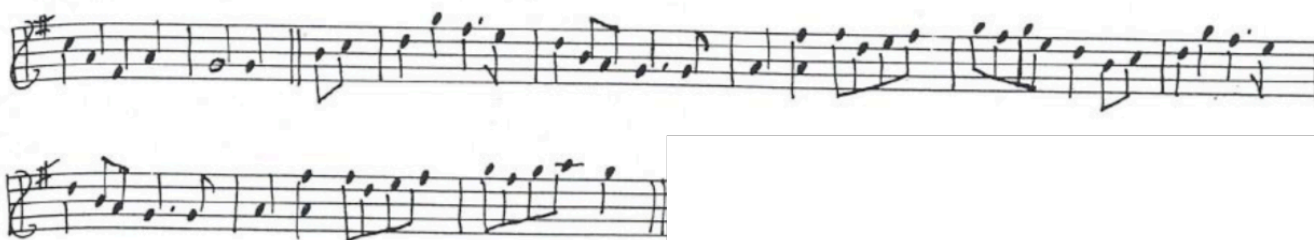


389. HORNPIPE (V)

Walter Neal, V, 1952, JB.

From Jack Ingle (Engle?).



A number of tunes begin with the formula seen in the first two bars of our No. 389, but they usually branch off into a different tune from ours. In a few cases, a general resemblance to our Part 1 is seen in the first part of another tune; but it never carries over into a following part. References to a few of these cases are given here, to tunes with the titles *Blue Eyes Polka*, *Navvie (on the Line)*, *New London*, and *London Hornpipe*: namely, Howe DSV, p. 67; Ford, p. 104; One Thousand, p. 88; Kerr, I, p. 42; White Un, No. 115; Kennedy FTB 1, No. 8.